

PERIOD HOMES

By Simon Miller



The Manor

Hayle Place, Cripple Street ME15 6DW

- GUIDE PRICE £300,000 - £325,000
 - Grade II Listed
- Quality Four Piece Family Bathroom
 - Ample Communal Parking
- Garage Available By Separate Negotiation
- Unique First Floor Apartment
 - Two Double Bedrooms
- Wealth of Character Throughout
 - Extensive Mature Gardens

Guide Price £300,000 Leasehold

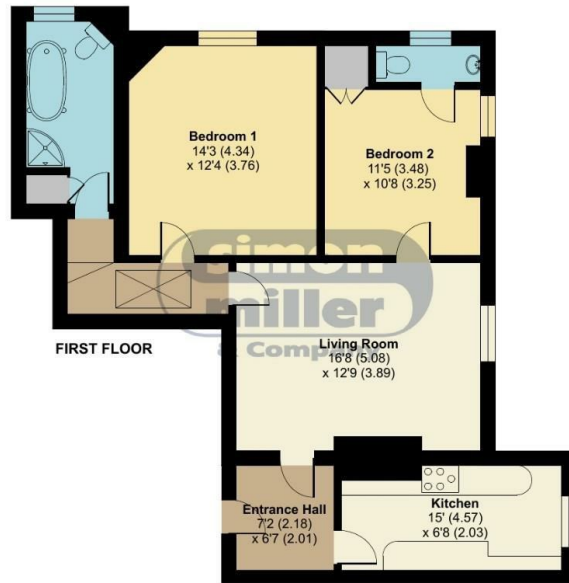
Local Authority Maidstone
Council Tax Band C
EPC Rating



The Manor, Hayle Place, Cripple Street, Maidstone, ME15

Approximate Area = 878 sq ft / 81.5 sq m

For identification only - Not to scale



Floor plan produced in accordance with RICS Property Measurement Standards incorporating International Property Measurement Standards (IPMS2 Residential). © nichecom 2023. Produced for Simon Miller & Company. REF: 167559

Period Homes by Simon Miller Office
Weald, 5 High Street, Headcorn, Ashford,
Kent, TN27 9NH

Contact

01622 850888
admin@periodhomesbysimonmiller.co.uk
<https://simonmiller.co.uk/period-homes/>

Agents Note: Whilst every care has been taken to prepare these particulars, they are for guidance purposes only. All measurements are approximate and for general guidance purposes only and whilst every care has been taken to ensure accuracy, they should not be relied upon and potential buyers/tenants are advised to recheck the measurements.

